



---

**Fast  
renovation**

---

**Design Tile**

**Gerflor®**

# Design Tile

the flexible interlocking ceramic tile



### Performance

- Resistance to Rolling traffic: suitable with pallet jack
- 7,8 mm thickness tile: durability and longevity
- PUR Treatment: Micro scratch resistance and easy maintenance



### Designs

- Ceramic tile look
- Wide range of wood and stone designs



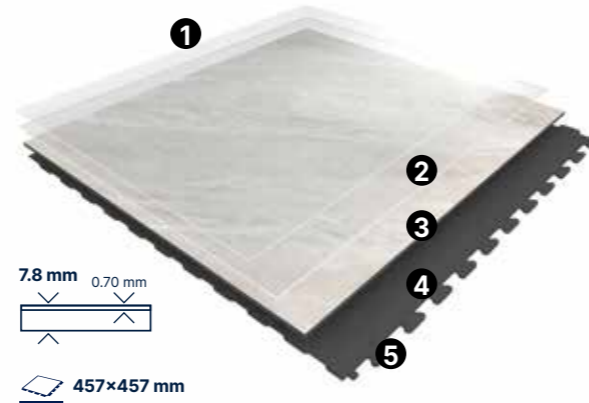
### Easy Installation

- Adhesive Free Interlocking system: Easy to remove and reuse
- Renovation over ceramic
- Hidden dovetail join solution: seamless secure fit



### Safety & Well being

- R10 Slip resistance
- Walking comfort



1. PUR surface treatment

4. Injection molded backing

2. Crystal wear layer & Structured emboss

5. Hidden, interlocking dove tail system

3. High-definition printed film

# Renovation solution

for high traffic applications



Restaurants



Schools



Hotels



Retail Shops

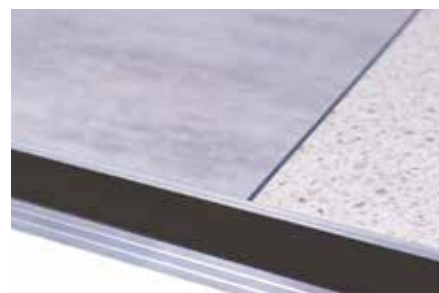


Supermarkets



Public Buildings

## Do not forget the finishes!



**Aluminum Ramp Profile** (Screwed)  
Width: 84mm / Gauge: 8mm /  
Length: 2.50m  
Code: 06630001



**Anti Bounce Mallet**  
5951



**Entrance mat**  
1725 - Quickmat Tile

## we care / we act



### Recycling

100% recyclable  
Up to 80% recycled content



### Indoor Air Quality

TVOC < 100 micrograms / m<sup>3</sup>  
No Formaldehyde



### Reach

100% REACH compliant  
Phthalate Free (except recycled content)  
FREE of heavy metals  
FREE of solvent





# Wood designs

 457 x 457 mm



1550 Vintage Maple  
Light grey grout



1551 Vintage Sand  
Brown grout



1552 Vintage Ash  
Light grey grout




1551 Vintage Sand



1552 Vintage Ash

# Terrazzo designs

 457 x 457 mm



1554 Terrazzo Grey



1553 Terrazzo Cream  
Dark grey grout



1554 Terrazzo Grey  
Dark grey grout



1549 Polished Concrete  
Light grey grout



1553 Terrazzo Cream



# Stone designs

 457 × 457 mm



1544 Shalestone



1548 Limestone  
Light grey grout



1555 Sandstone  
Light grey grout



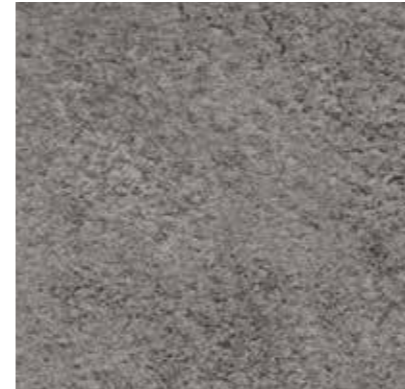
1544 Shalestone  
Dark grey grout



1555 Sandstone

# Mineral designs

 457 × 457 mm



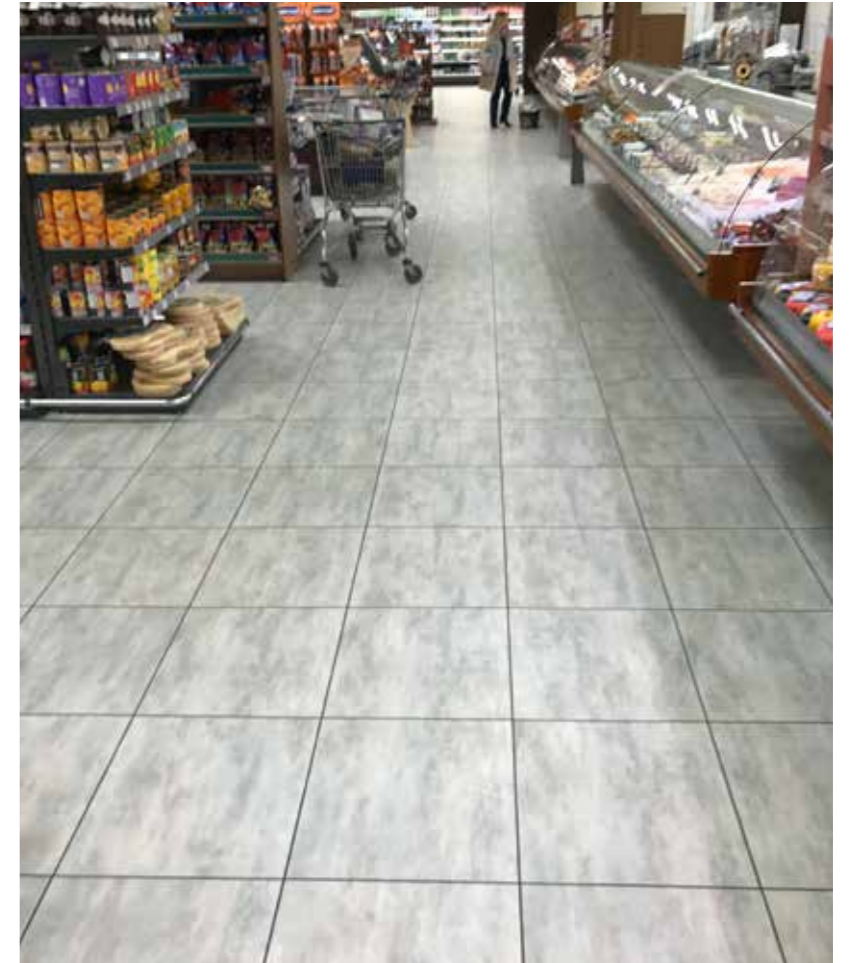
1545 Clay  
Dark grey grout



1546 Granite  
Dark grey grout



1547 Volcano  
Black grout



1546 Granite



1547 Volcano



Z0046269

## Design Tile

### Description

Total Thickness	EN ISO 24346	mm	7.8
Thickness of the wearlayer	EN ISO 24340	mm	0.70
Weight	EN ISO 23997	g/m <sup>2</sup>	12 000
Size	EN ISO 24342	mm	457 /457
Number of planks per box / sqm per box	-	-	5 / 1.04 sqm

### Classification

Norm/Product Specification	-	-	EN ISO 10582
European Classification	EN ISO 10874	Class	34-43
Fire Rating	EN 13501-1	Class	Bfl-s1
Static Electrical Propensity	EN 1815	kV	< 2
Slip Resistance Wet	EN 16165 app.B (DIN 51 130)	Class	R10

### Performances

Wear Resistance	EN 660.2	mm <sup>3</sup>	≤ 2.0
Wear Group	-	group	T
Type Binder content	ISO 10582	group	I
Curling	EN ISO 23999	mm	≤ 1
Dimensional stability (norm)	EN ISO 23999	%	≤ 0.15
Residual Indentation	EN ISO 24343-1	mm	≤ 0.05
Castor chair test	ISO 4918	-	OK
Shore hardness	EN ISO 868	H <sub>o</sub>	> 60
Thermal Conductivity	EN ISO 10456	W/(m.k)	0.25
Colour Fastness	EN 20 105 - B02	degree	≥ 6
Surface Treatment	-	-	PUR+
Chemical Products Resistance <sup>(1)</sup>	EN ISO 26987	-	OK

### Environment/Indoor Air Quality

TVOC after 28 days	ISO 16000-6	micrograms/m <sup>3</sup>	<100
--------------------	-------------	---------------------------	------


### CE Marking



EN 14041



<sup>(1)</sup> Regarding the resistance to chemicals, please download the corresponding leaflet from our website.

 The information contained in this document is valid from 01/07/2024 and is subject to change at any time without notice. In the context of constantly changing technology, our customers are responsible, prior to any use, for checking with us that this document is the version in force. Rubber leaves indelible stains on vinyl floorings: do not use mats with rubber backing and replace tubular furniture feet with those made of PVC or polyamide. Place mats of sufficient length at entrances to reduce outside sources of dirt.

## We care / we act Our Commitments for a Sustainable future



**CARBON FOOTPRINT\***  
-20 % kg CO<sub>2</sub> equivalent/m<sup>2</sup> between 2020 and 2025



**BIOSOURCED CONTENT\*\***  
10 % by 2025



**RECYCLED CONTENT**  
30 % by 2025



**ADHESIVE FREE\*\*\***  
35 % by 2025



**ANNUAL VOLUME RECYCLED**  
60 000 t by 2025



\* Scopes 1 and 2 defined in the GHG protocol \*\* % of activity with biosourced materials \*\*\* % of activity - adhesive free solution